

Automatic Voltage Regulator (AVR)

PowerWalker AVR 1200

PowerWalker AVR 1000

PowerWalker AVR 600



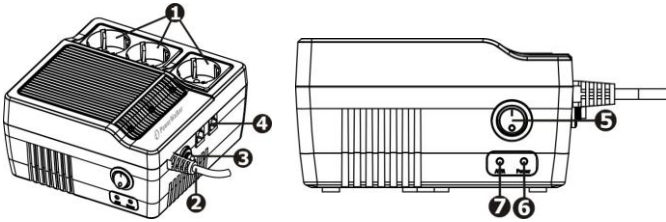
Quick Start Guide

EN

1. Introduction

Thank you for purchasing PowerWalker product. This series is designed to automatically maintain a constant voltage level to protect sensitive electronics from brownouts and overvoltages. With its fashionable and flexible cabinet, it can be installed on a desk or wall without causing an unsightly or unprofessional image, and will perfectly utilize a limited working environment. This series offers one-step boost and one-step buck stabilizer to continuously supply a clean power source to its connected equipment.

2. Product Overview



- | | |
|---|-------------------|
| 1. Output receptacles (for connected equipment) | |
| 2. AC Input | 5. Power Switch |
| 3. Circuit breaker | 6. Power LED |
| 4. Modem/phone line surge protection | 7. Boost/Buck LED |

Wall Mount the Unit

The unit can be mounted to a wall surface. Please follow below steps:

1. Use tape to hold this page in place against the wall.
2. Use a sharp nail to puncture the center of the two holes to mark the wall. (see below chart 1)
3. Mount the unit by positioning the key-hole slots over the mounting nails. (see chart 2)

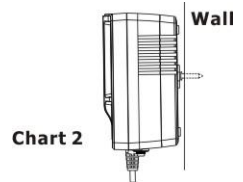
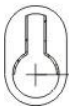
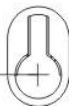


Chart 1



128 mm



3. Installation and Initial Startup

Inspection

Remove the unit from the shipping package and inspect it for damage that may occur during transportation. Notify the carrier and place of purchase if any damage is found.

Placement & Storage Conditions

Install the unit in a protected area that is free of excessive dust and has adequate air flow. Please place the AVR away from other units at least 2.5cm to avoid interference. Do NOT block the top or side air vents on the unit.



Do not operation the unit in an environment where the ambient temperature or humidity is outside the limits listed in the specifications. Operate the unit in an environment free of excessive dust, mechanical vibration, inflammable gases and explosive or corrosive atmospheres.



- Connect to the Wall Outlet**
 Plug the input power cord of the unit to the wall outlet.
- Connect the Loads**
 Plug in the loads to output receptacles of the unit and switch the unit "ON" by pressing the side panel ON/OFF switch to "ON" position. Then the connected devices will be powered.
- Connect Modem/Phone for Surge Protection (Only for the model with RJ-11)**
 Connect a single modem/phone line into surge-protected "IN" outlet on the unit. Connect from "OUT" outlet to the computer with phone line cable.
- Turn On/Off the Unit**
 Turn on the unit by pressing the power switch to "ON" (I) position. This switch may be used as the master ON/OFF switch for all connected devices.

4. Important Safety Warning (SAVE THESE INSTRUCTIONS)

To safely operate this voltage regulator, please read and follow all instructions carefully. Read this manual thoroughly before attempting to unpack, install, or operate. You may keep this quick guide for further reference.

- **CAUTION:** The unit is designed only for use under the 50 Hz input frequency and pure sine wave environment. Any other input frequency or wave form will effect the voltage range and load capability.
- **CAUTION:** Please DO NOT connect the unit to the environment with direct voltage or simulated sine wave.
- **CAUTION!** To prevent the risk of fire or electric shock, install in a temperature and humidity controlled indoor area free of conductive contaminants. (See the specifications for the acceptable temperature and humidity range.)

5. Applications

- **CAUTION:** The total power consumption of all equipment plugged into the voltage regulator must not exceed its capacity*. A total load in excess of its capacity* will cause the fuse to fault (blow).
(*For the capacity of unit, please check the specifications.)
- The voltage regulator is designed for use with voltage sensitive equipment such as: a home computer, monitor, inkjet printer, scanner or fax. It is also designed for use with home electronics equipment such as television, stereos, CD players, VCRs, and DVD players, data processing equipment, modems, typewriters, calculators, and telephone equipment.
- Appliances not suitable for use with the product are items such as freezers, power tools, air conditioners, dehumidifiers, blenders, or any device that employs an AC motor for operation. Not for use with small fuel generators. Also excluded are life sustaining equipment.
- When use the voltage regulator with an Interruptible Power Supply (UPS), connect the UPS to the output of this product, then connect the product to the wall outlet.

6. Trouble Shooting

Before using the product, please be sure that Power LED is on. If the Power LED is not on, please check the following steps:

1. Check if the mains is normal.
2. Check if the power cord is connected firmly.
3. Check if the connected devices are connected to the unit firmly.
4. Check if the unit is turned on.

Problem	Possible Cause	Solutions
Circuit breaker is "tripped".	The unit is overload.	Remove some loads first. Reset the circuit breaker by pressing the button again.
The unit is turned off automatically and the Power LED is not lit.	The unit is over-heated. It's internal protected function.	Remove some loads and wait until the unit is cool. Then turn on the unit again.

7. Specifications

Model	AVR 600	AVR 1000	AVR 1200
CAPACITY	600VA / 360W	1000VA / 600W	1200VA / 720W
Input Voltage	230VAC		
Input Voltage Range	180 - 264VAC		
Input Frequency	50Hz		
Voltage Regulation			
Output AVR	+/-8%		
INDICATOR			
Power LED	Green lighting		
Boost/Buck LED	Red lighting		
PROTECTION			
Comprehensive Protection	Short circuit, overload, and over-temperature protection		
PHYSICAL			
Dimension (DxWxH)	166mm x 161mm x 86.7mm		
Net Weight (kgs)	1.7	2.0	2.1
Environment			
Humidity	0-90% RH @ 0-40° C (non-condensing)		
Noise Level	Less than 40dB		